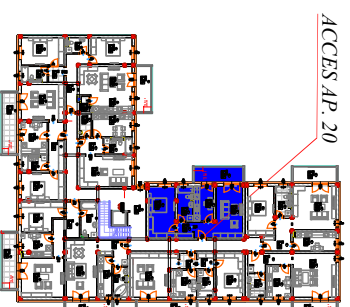
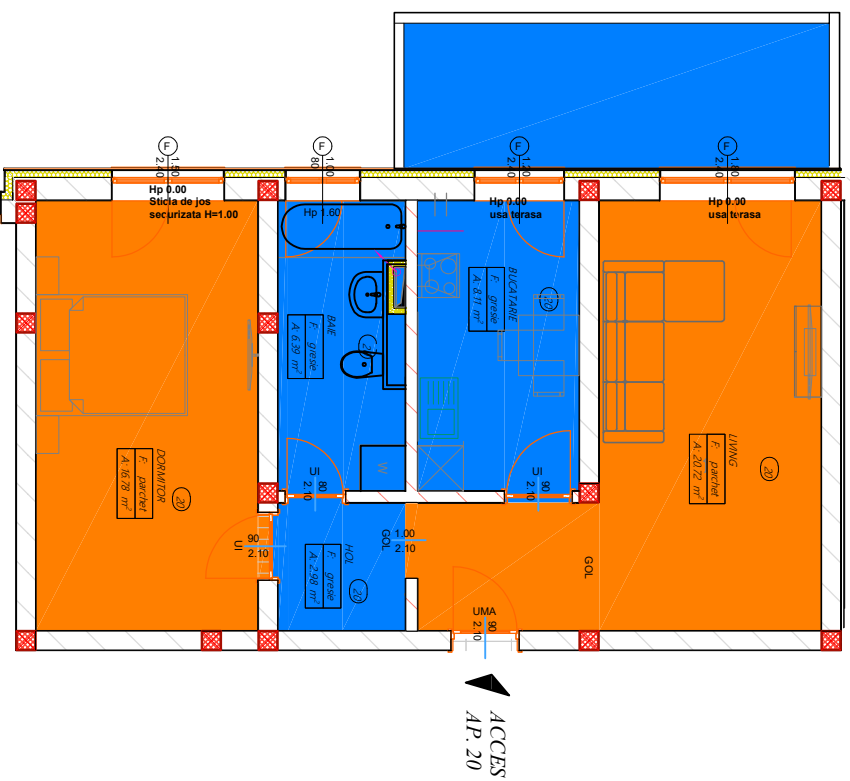


# Plan etaj 2

## Ap. 20



ACCES AP. 20



**Plan AP. 20, scara 1:50**

Sconstruit Ap. 20 = 68,85 mp

Sbalcon Ap. 20 = 9,57 mp

Suital Ap. 20 = 54,98 mp

Suital + Sbalcon Ap. 20 = 64,55 mp