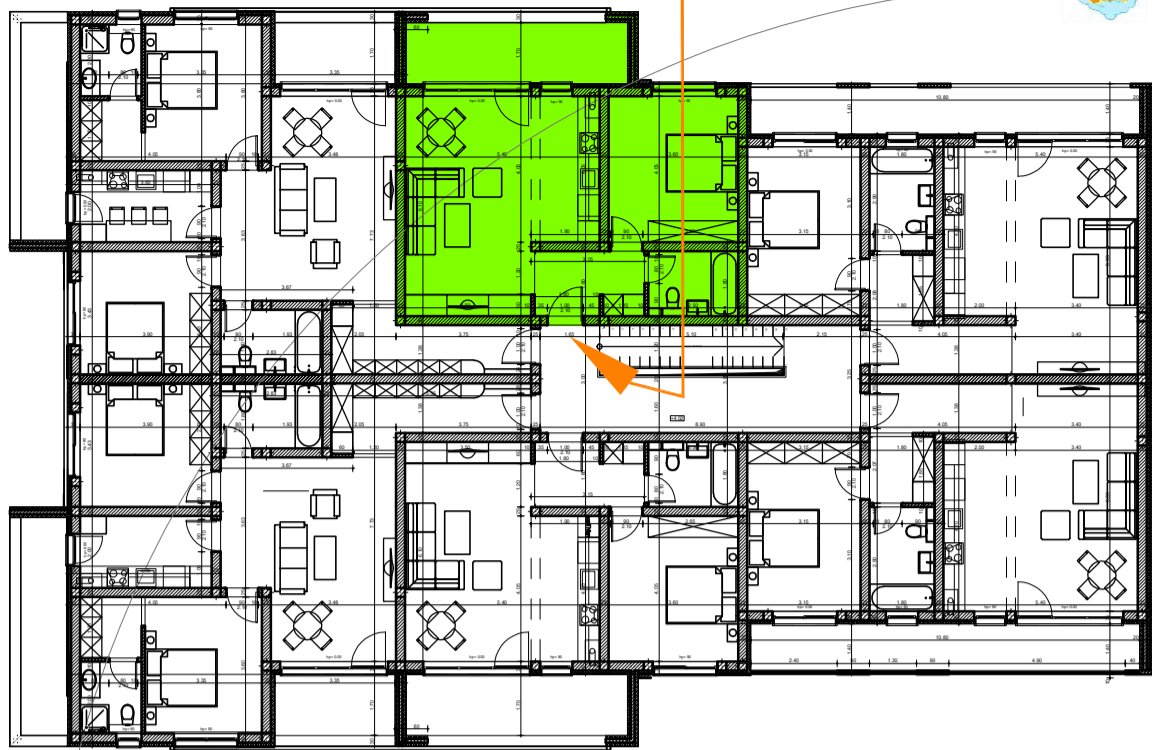
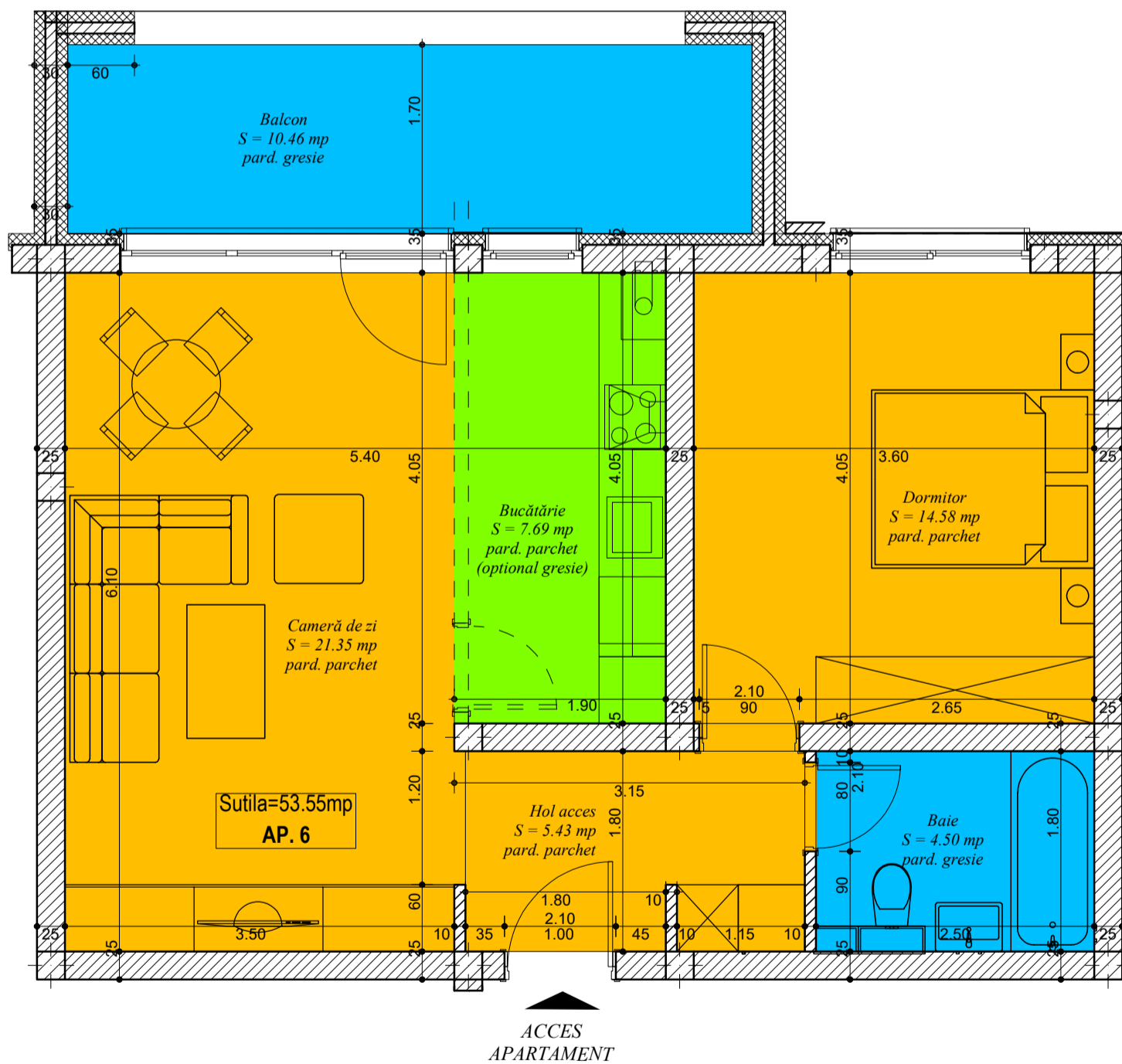


Imobil SOPHIE 11 CORP C1



ACCES IMOBIL



**Plan AP. 6 imobil Sophie 11 Corp C1**

Sconstruit Ap. 6 = 64.45 mp

Sbalcon Ap. 6 = 10.46 mp

Sutil Ap. 6 = 53.55 mp

Sutil + Sbalcon Ap. 6 = 64.01 mp