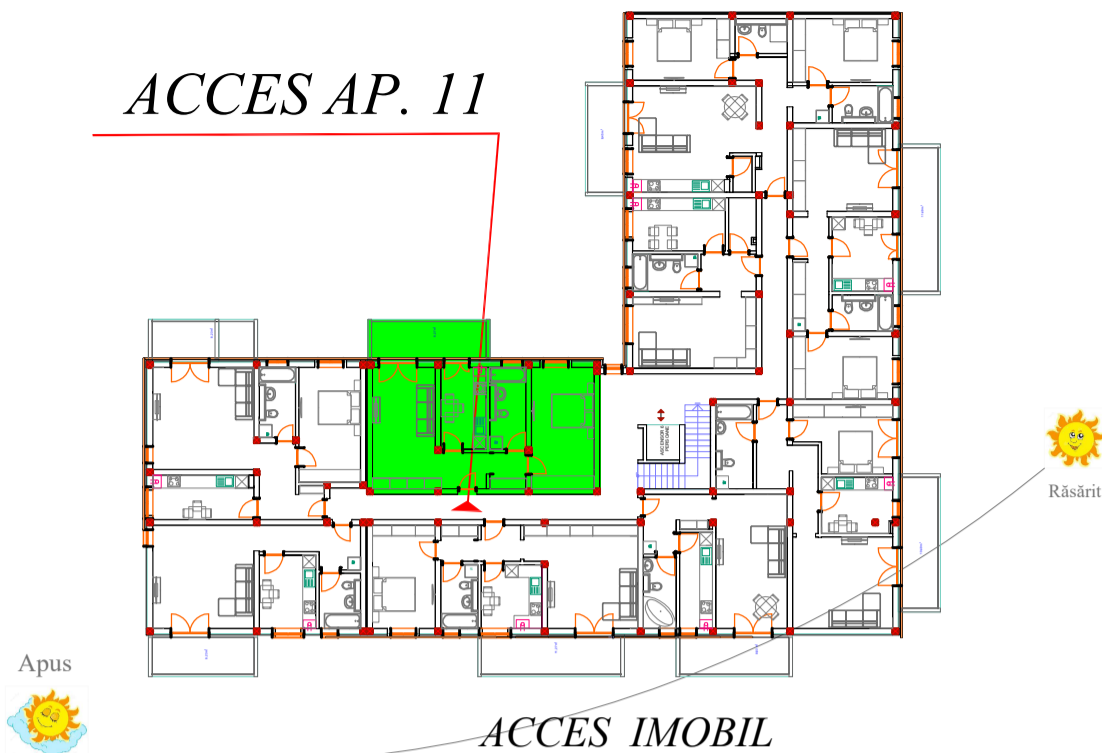
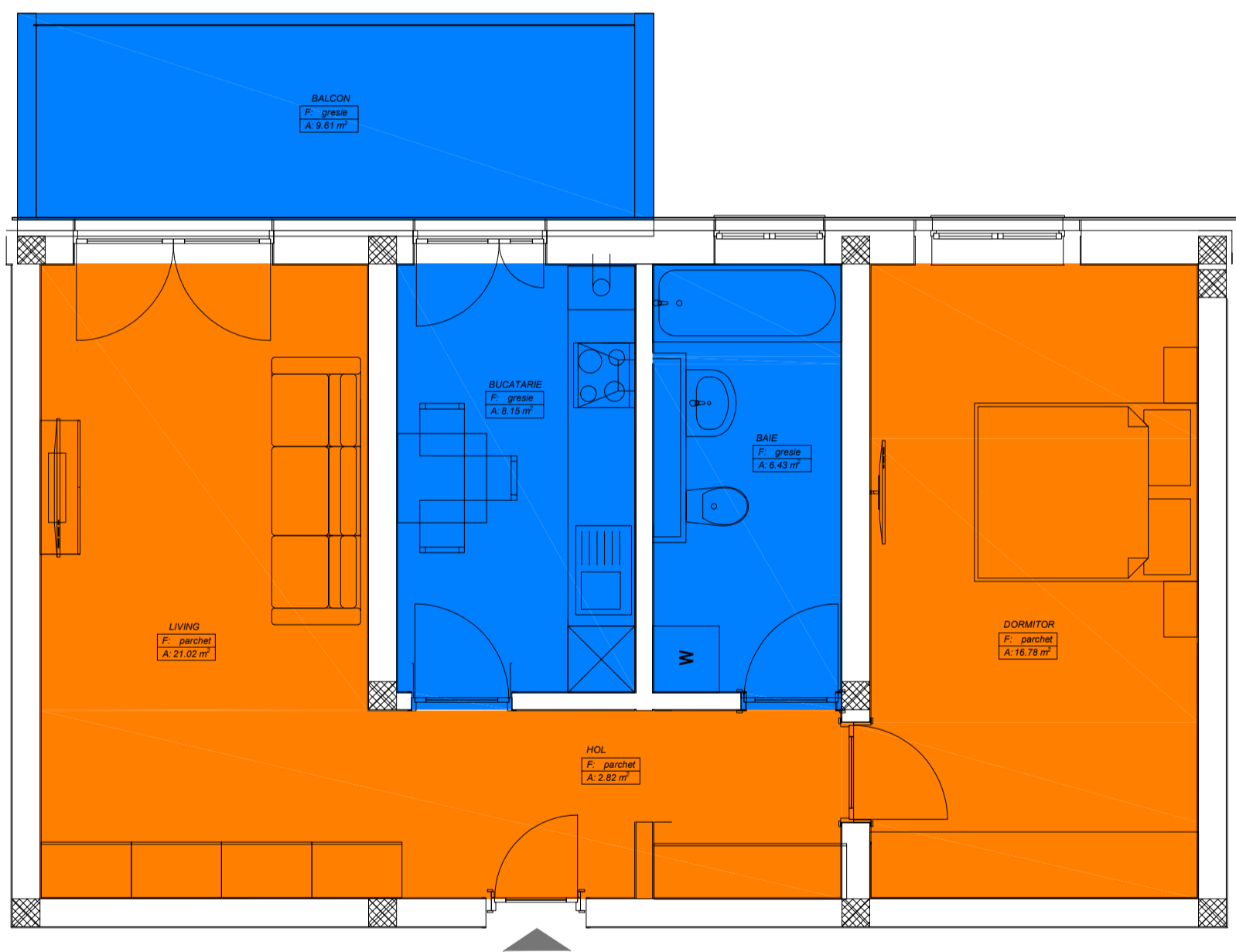


IMOBIL SALIA 2

ACCES AP. 11



ACCES IMOBIL



ACCES AP. 11

Plan AP. 11, scara 1:50

Sconstruit Ap. 11 = 68.85 mp

Sbalcon Ap. 11 = 9.61 mp

Sutil Ap. 11 = 55.20 mp

Sutil + Sbalcon Ap. 11 = 64.81 mp