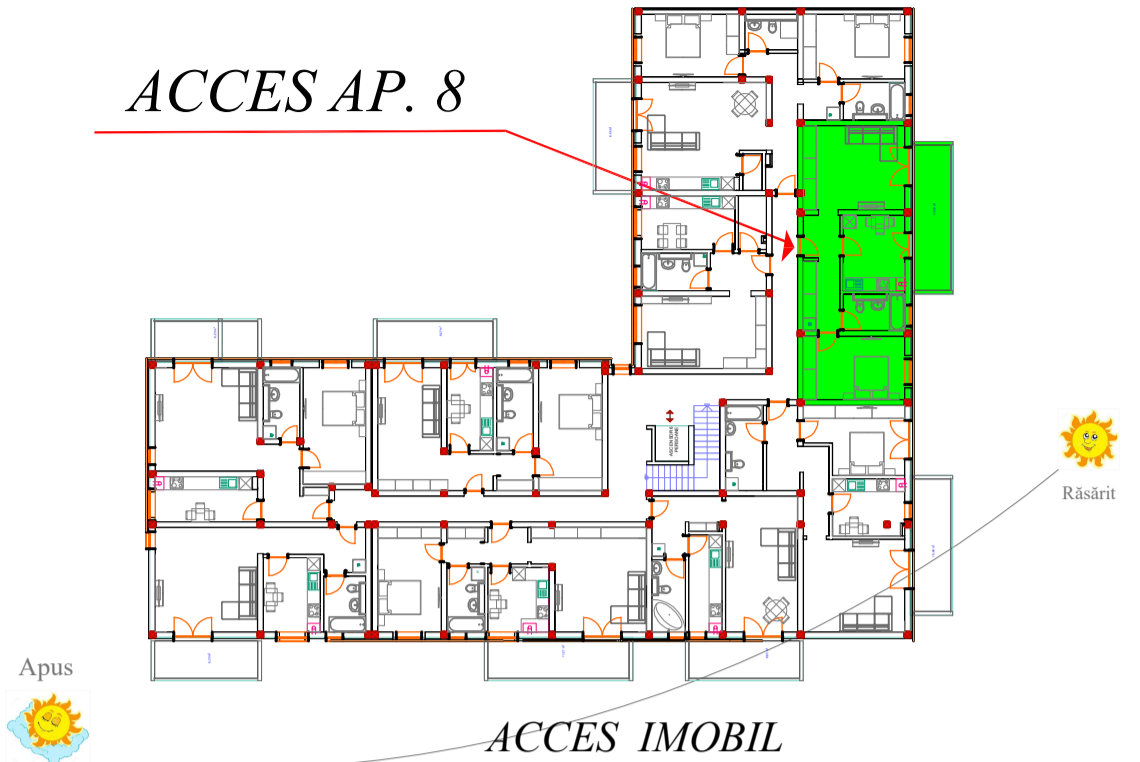
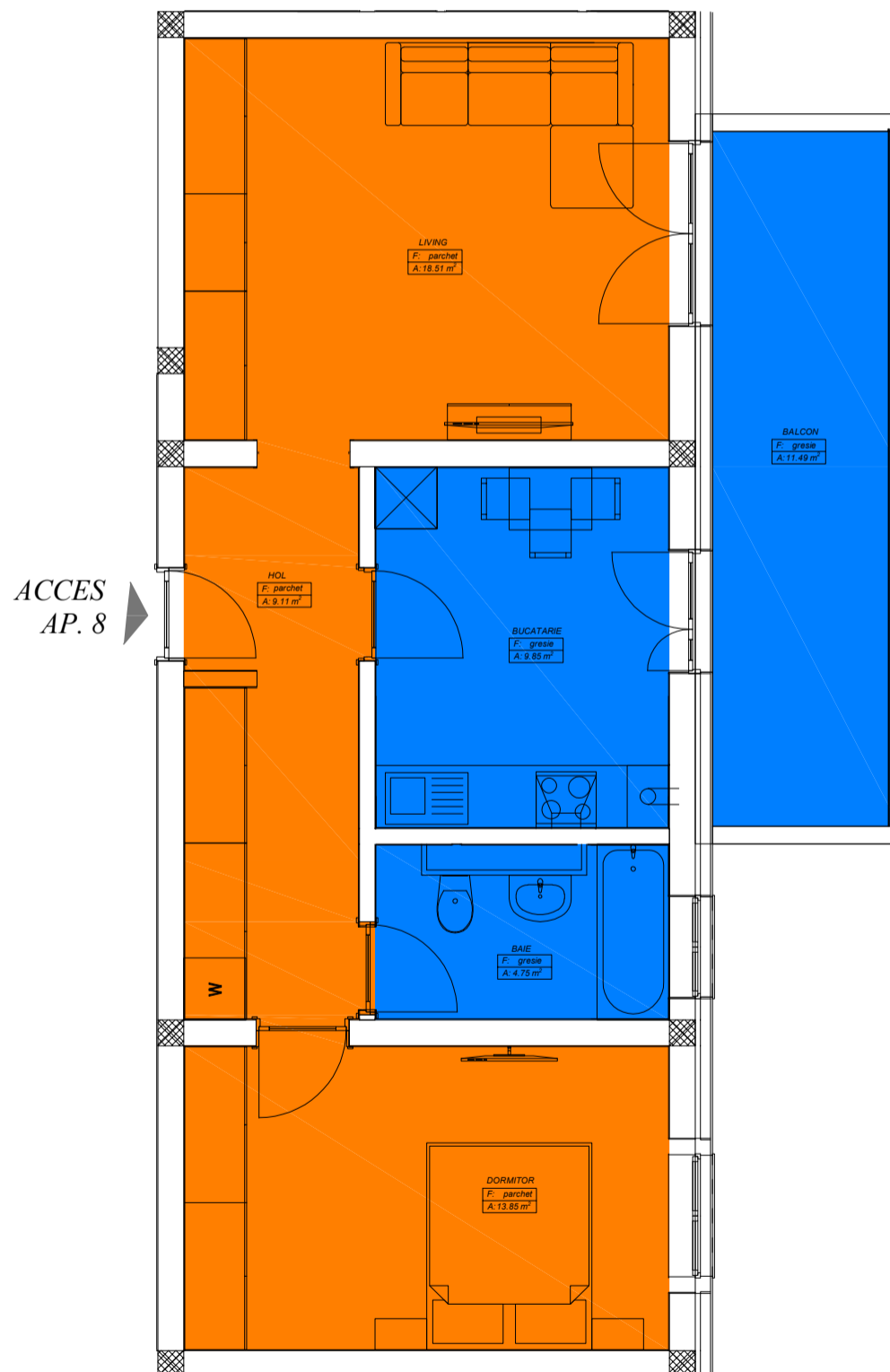


ACCES AP. 8



ACCES IMOBIL



Plan AP. 8, scara 1:50

Sconstruit Ap. 8 = 69.19 mp

Sbalcon Ap. 8 = 11.49 mp

Sutil Ap. 8 = 56.07 mp

Sutil + Sbalcon Ap. 8 = 67.56 mp