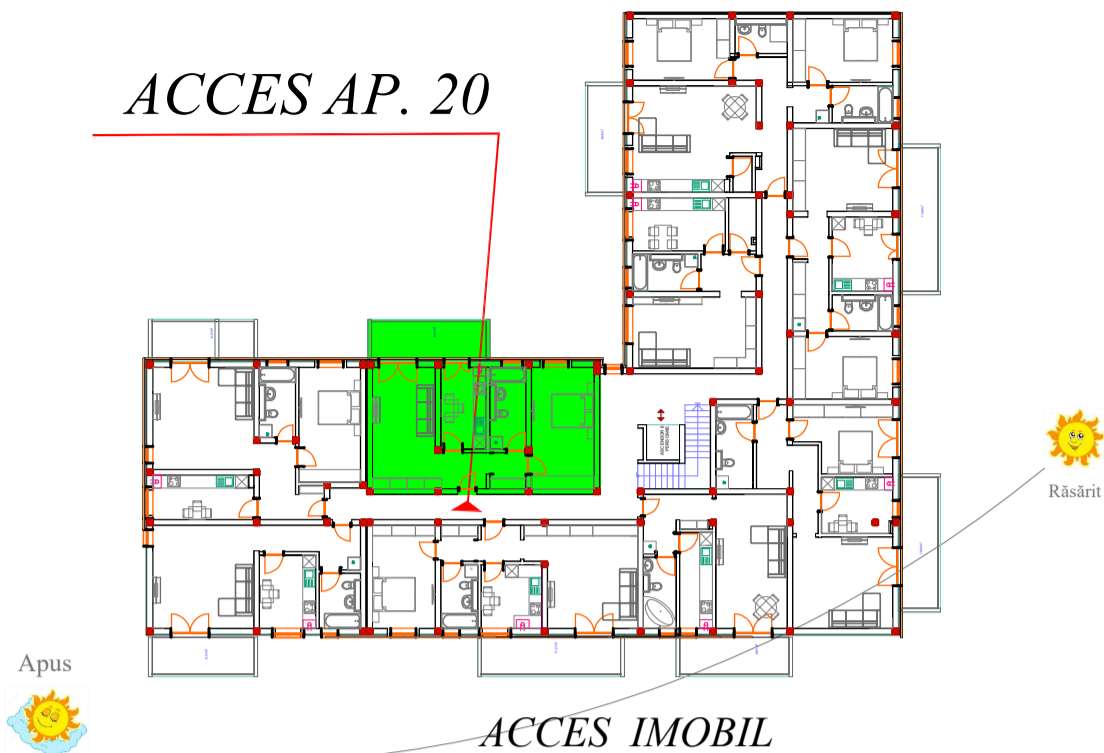
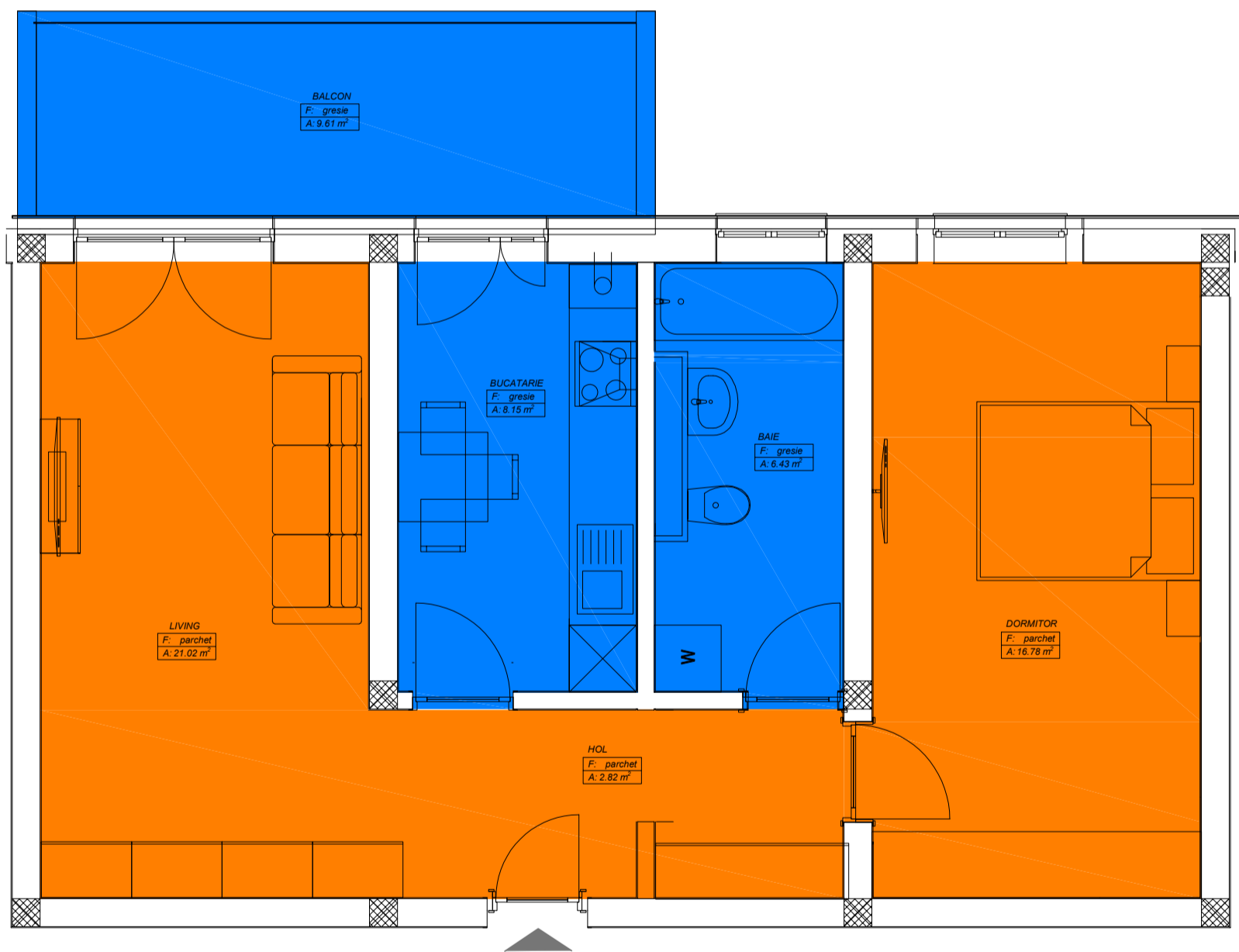


IMOBIL SALIA 2

ACCES AP. 20



ACCES IMOBIL



ACCES
AP. 20

Plan AP. 20, scara 1:50

Sconstruit Ap. 20 = 68.85 mp

Sbalcon Ap. 20 = 9.61 mp

Sutil Ap. 20 = 55.20 mp

Sutil + Sbalcon Ap. 20 = 64.81 mp