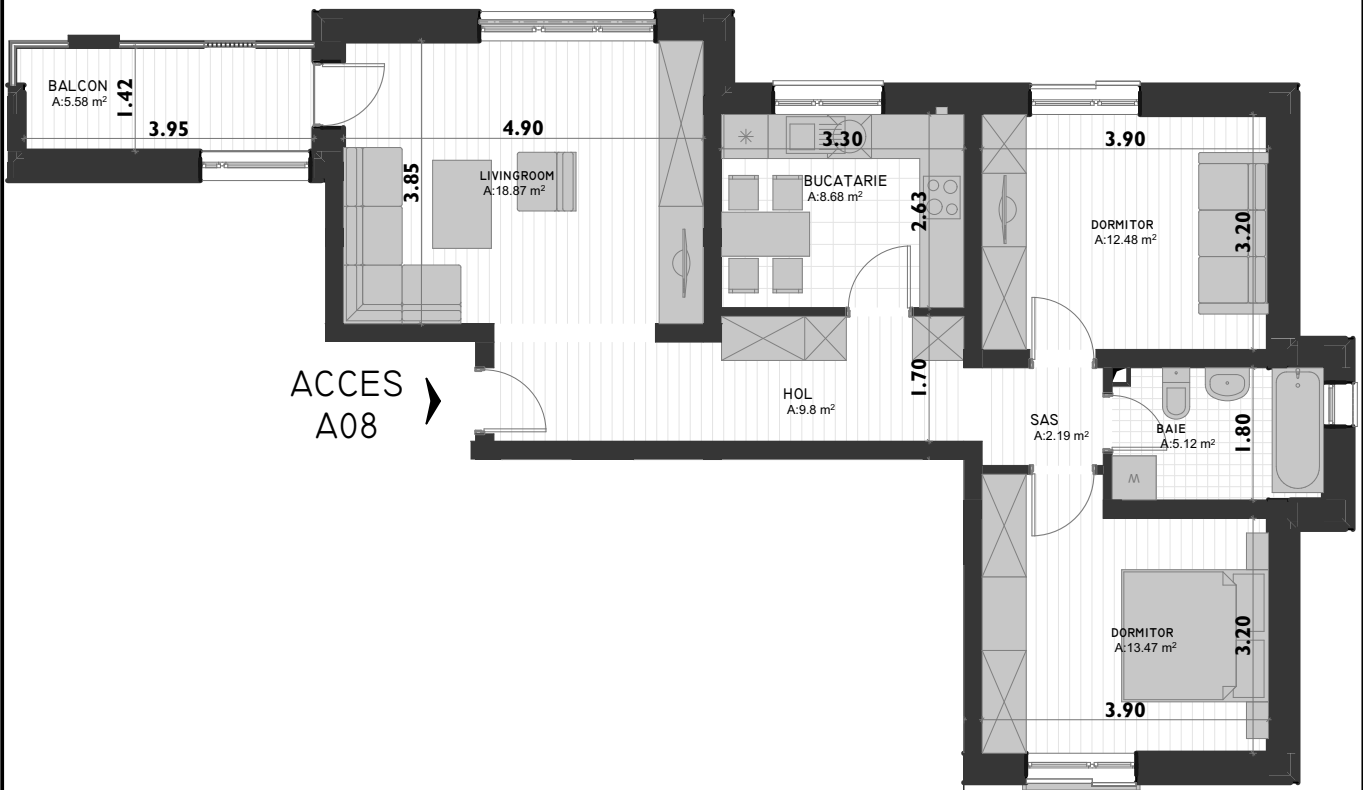
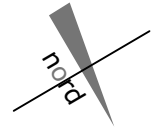
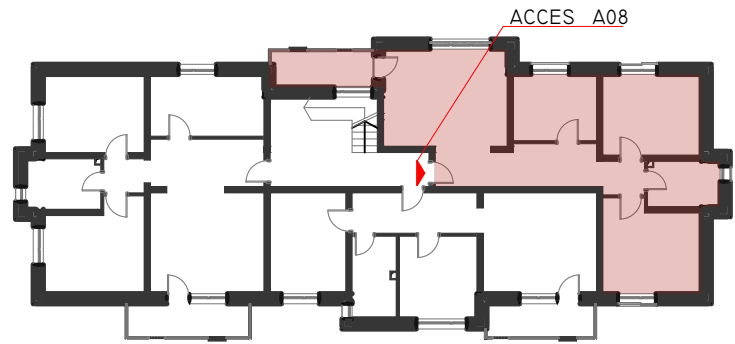


PLAN ETAJ 2

A08



Plan apartament 08, sc. 1:100

$S_{\text{construit A08}} = 92.04 \text{ m}^2$

$S_{\text{balcon A08}} = 5.58 \text{ m}^2$

$S_{\text{util A08}} = 70.61 \text{ m}^2$

$S_{\text{util A08}} + S_{\text{balcon A08}} = 76.19 \text{ m}^2$