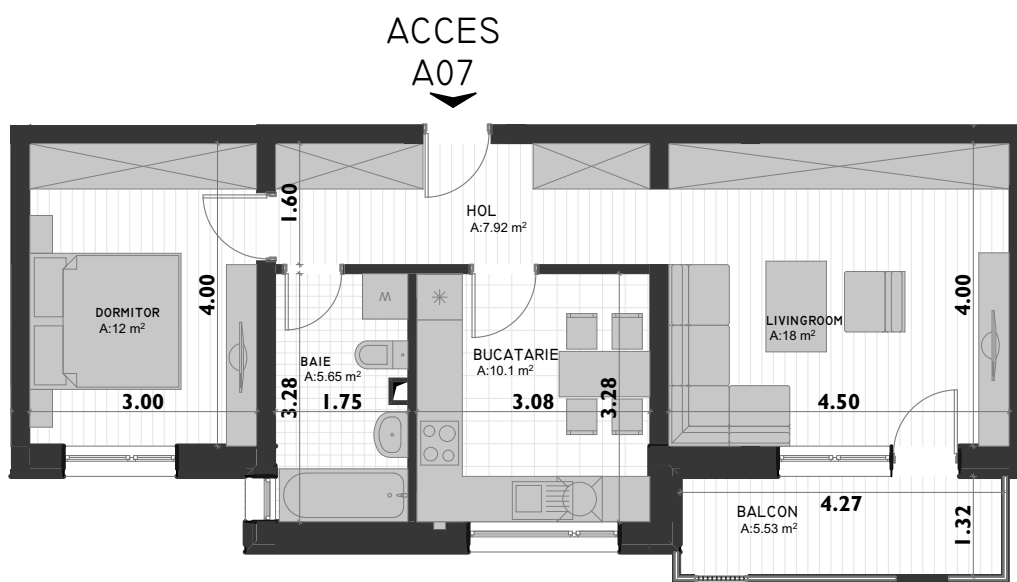
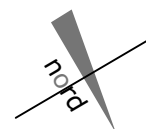
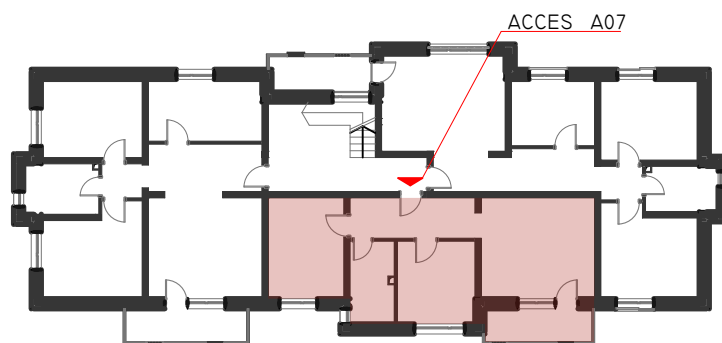


PLAN ETAJ 2

A07



Plan apartament 07, sc. 1:100

$S_{\text{construit A07}} = 68.44 \text{ m}^2$

$S_{\text{balcon A07}} = 5.53 \text{ m}^2$

$S_{\text{util A07}} = 53.67 \text{ m}^2$

$S_{\text{util A07}} + S_{\text{balcon A07}} = 59.20 \text{ m}^2$